



EarthMindedTM
RainStationTM

RS-0002 v1.0 - User Guide

1 Warnings Regarding Potential Hazards

PLEASE REFER TO HAZARD WARNINGS BOOKLET FOR MORE INFORMATION

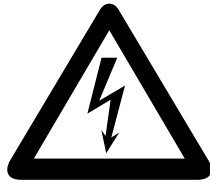
Drowning Hazard



Contamination Hazard



Electrocution Hazard



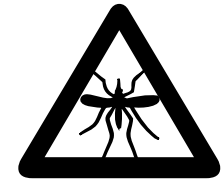
Installation Hazard



Tilting/Tipping Hazard



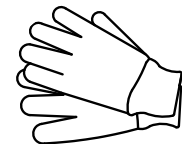
Infestation Hazard



Wear Safety Glasses



Wear Safety Gloves



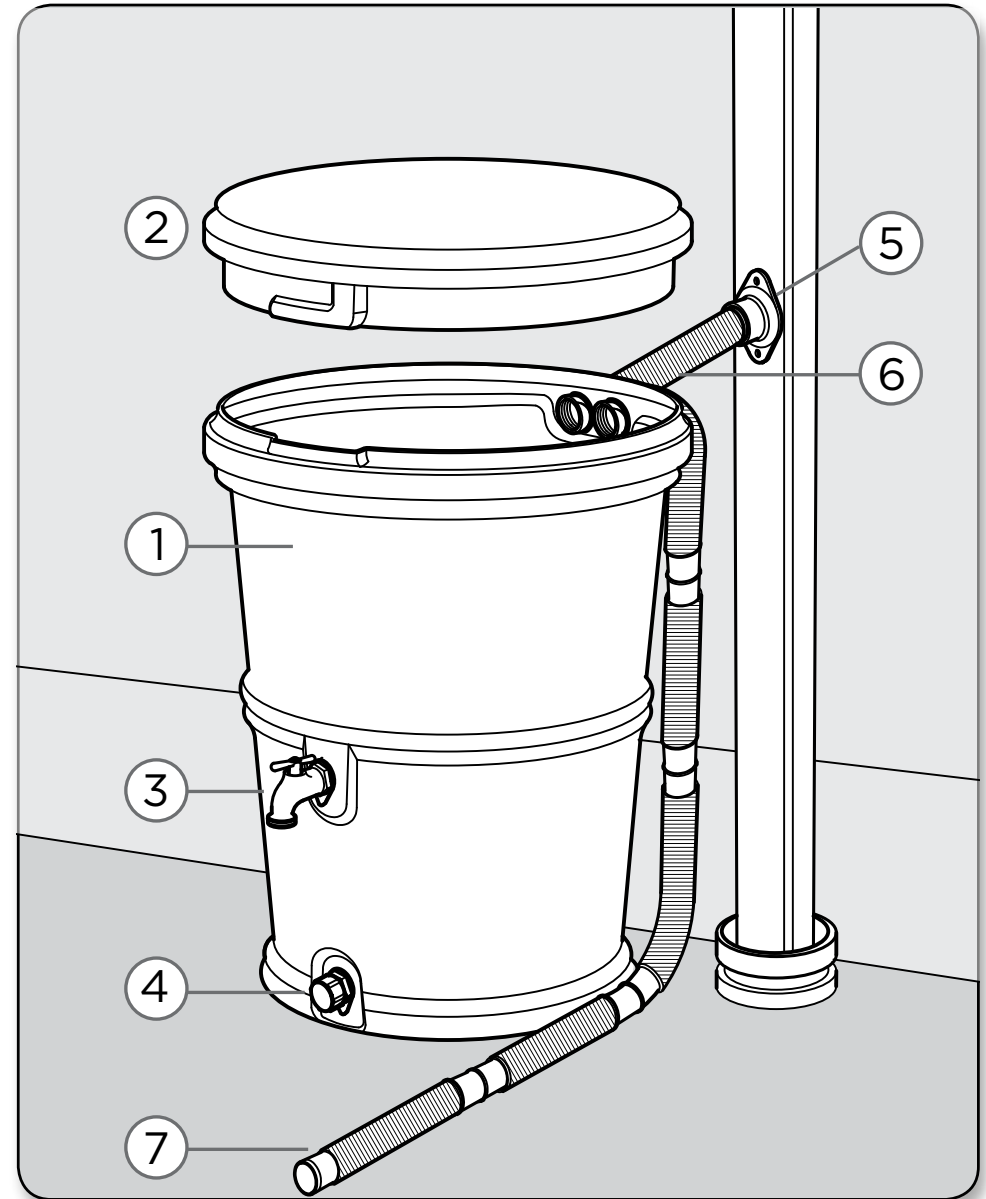
2

The RainStation™ is a state-of-the-art sealed rainwater collection system. With our patented FlexiFit Diverter, the RainStation™ is easy to install, clean, and winterize. Properly installed, it will provide years of trouble free use.

1. Barrel
2. Lid
3. Spigot
4. Bottom Drain and Cap
5. FlexiFit Diverter
6. Fill hose
7. Drain hose




Some areas prohibit the use of rain barrels.
Please check local regulations before installation.

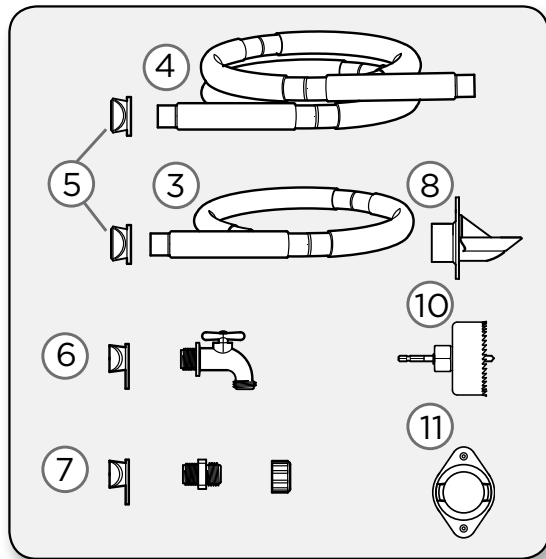
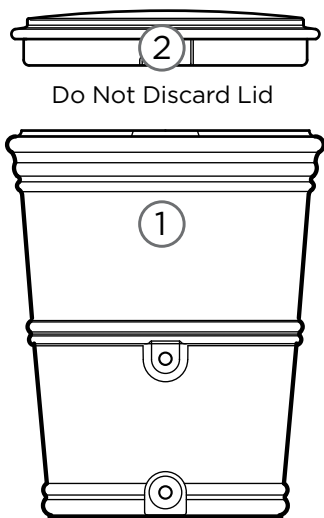
The RainStation™ barrel and lid are 100% recyclable.
Made from approximately 30% recycled content.



Please read all instructions and warnings before installation, and retain this brochure for future reference.

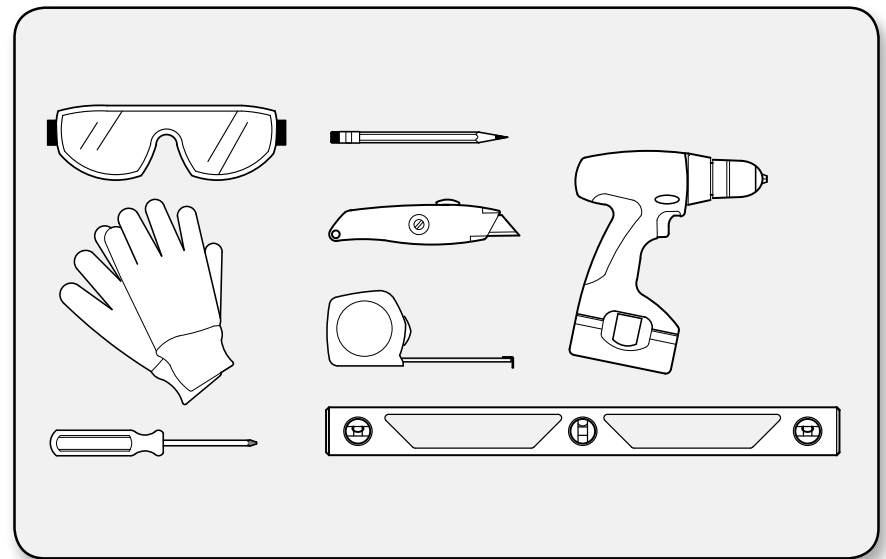
3 Contents

1. Barrel 
2. Lid 
3. Fill hose (3') 
4. Drain hose (6') 
5. Water inlet (2)
6. Spigot and seal
7. Drain, cap, and seal
8. FlexiFit Diverter
9. Screws (3)
10. 2 1/8" Hole Saw
11. Winter Hole Cover
12. User guide
13. Hazard Warnings Booklet



Tools Needed

1. Safety glasses
2. Safety gloves
3. Phillips screwdriver
4. Pencil
5. Beam level
6. Work knife
7. Measuring tape or ruler
8. Drill
9. Solid surface base (optional)

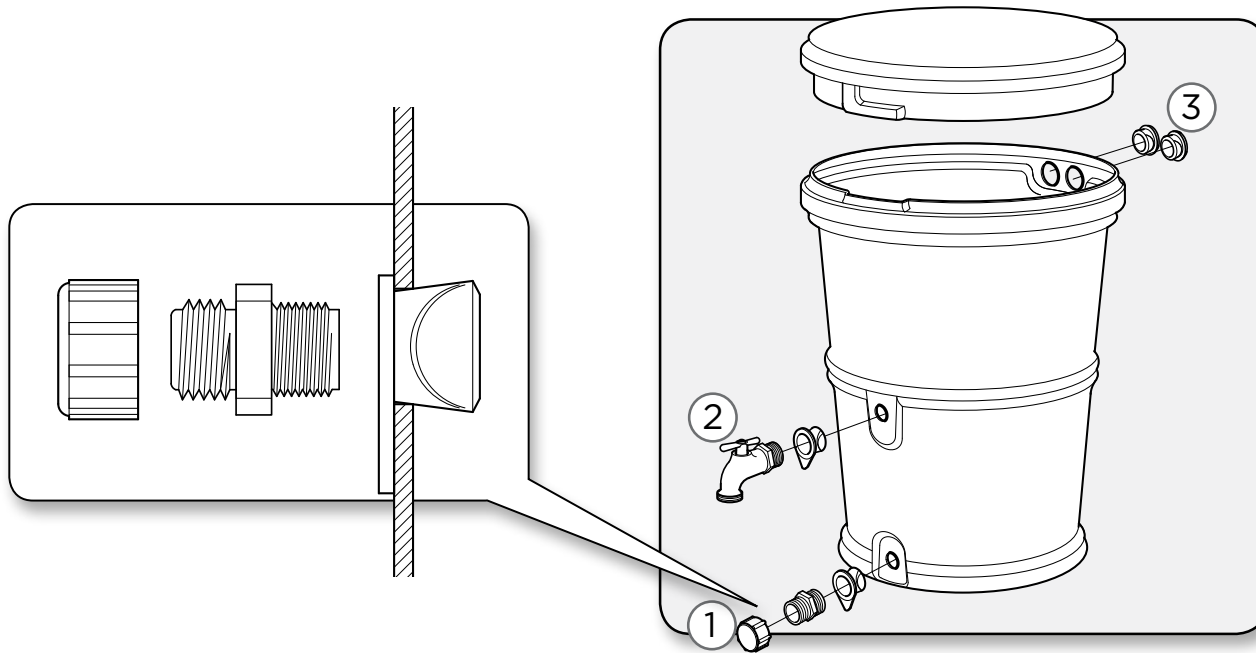


4 Assembling the Barrel

1. Install bottom drain
 - a. Insert small seal into drain hole at bottom of barrel.
 - b. Thread drain cap onto the drain post, **making sure the cap is on the larger-threaded side.**
 - c. Thread the assembly into the drain hole seal until the hex collar is tight against the seal.

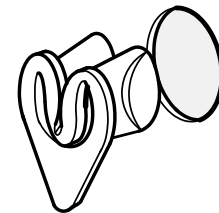
To prevent damage to the seal, do not over-tighten.

2. Install the spigot
 - a. Insert second small seal into spigot hole at mid-height on the barrel.
 - b. Thread spigot into the seal until the spigot is tightened and positioned with the water outlet pointing down.
3. Install the water inlet.
 - a. Insert the two (2) water seals into the fill holes on the backside of the barrel.
 - b. Push both seals in until they sit flat against the barrel.



TIP

Pinch the threaded rubber seal into a "C" shape before inserting into the hole in the barrel



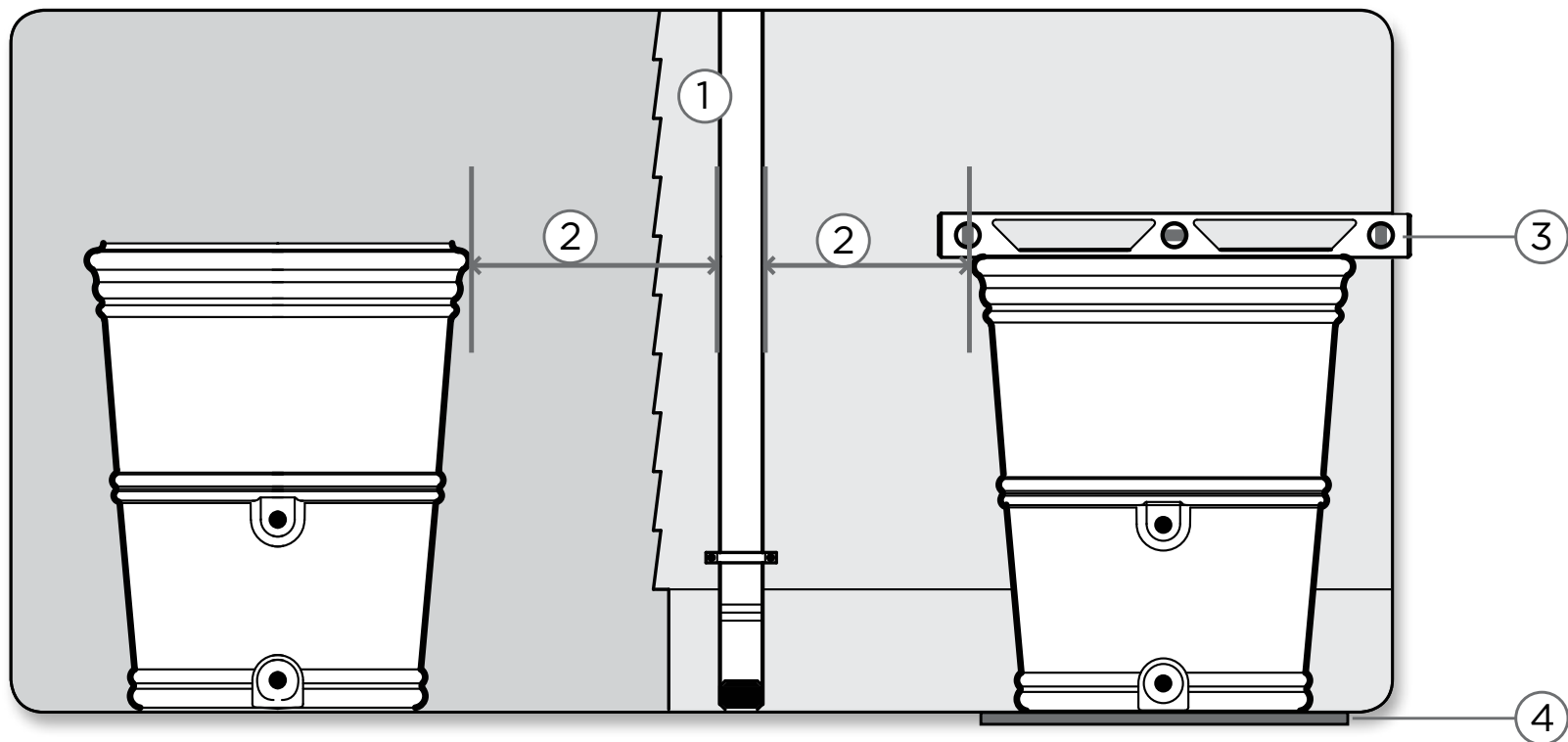
TIP

Soapy water on the rubber seal reduces friction and makes insertion easier.

5 Selecting and preparing the site

1. The RainStation™ should be located close to a downspout, near the anticipated area of use, on a solid and level surface
 - a. If using the spigot to distribute water, the area directly in front of the spigot should be easily accessible.
 - b. If using a garden hose or soaker hose to distribute water, the barrel, and entire length of the hose path, must be elevated above the area to be watered.
2. Place the barrel in the intended location and check to see that the fill hose can reach from the downspout to the water inlet on the back of the barrel.
3. To make sure the surface beneath the barrel is level, set a beam level on the barrel rim to check.
4. Placing the barrel on a solid surface base is recommended.

If using a garden hose the barrel should be elevated for maximum water pressure.



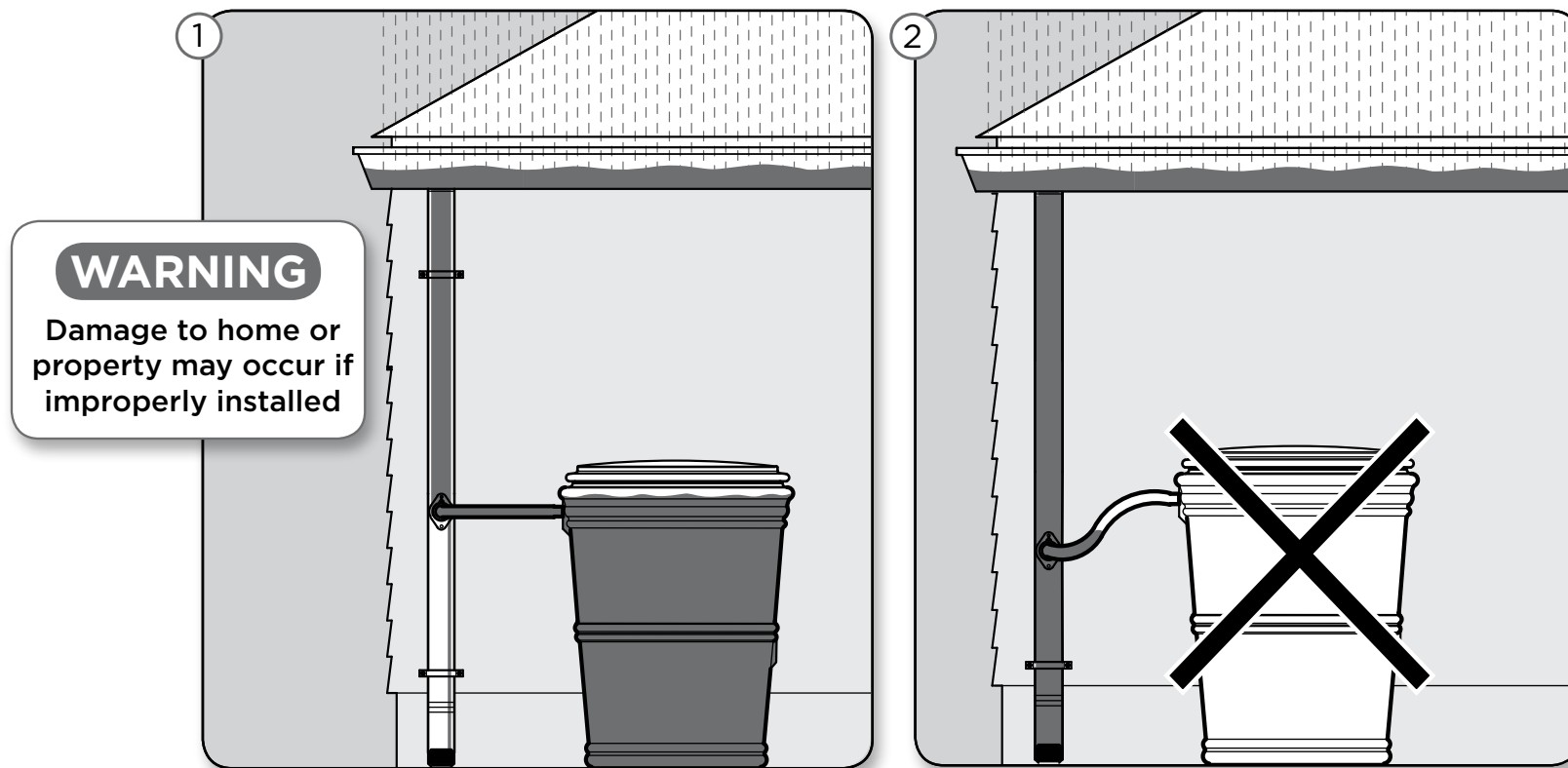
6 About the FlexiFit Diverter

The RainStation™ uses a FlexiFit Diverter to catch water in the downspout and send it to the barrel via a fill hose.

The diverter is inserted into a hole that is cut into the downspout.

1. The hole must be drilled at the correct height for the diverter to work properly.
2. If the hole is cut too low, the barrel will not fill.

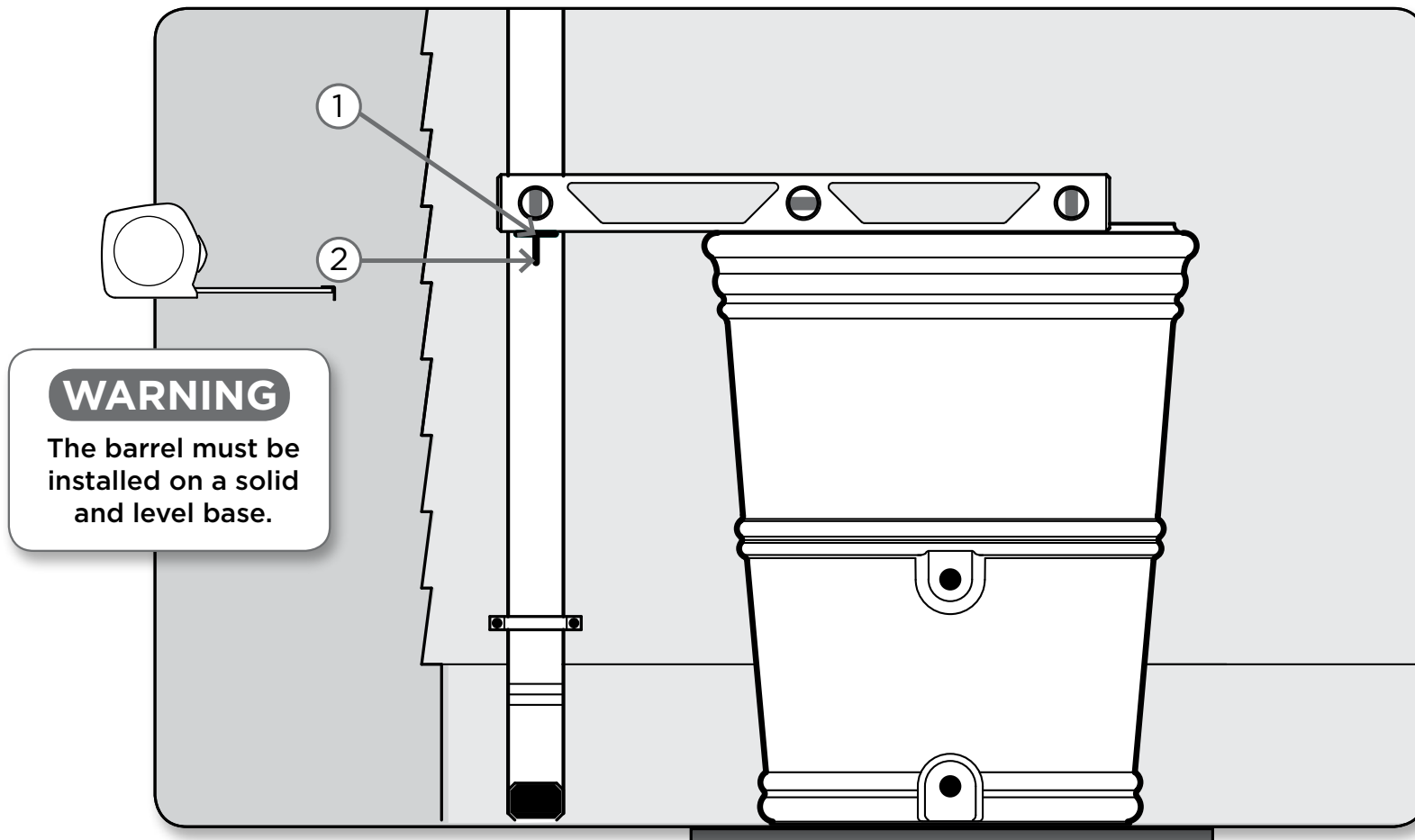
Do not cut the downspout until reading panels 7 and 8.



7 Marking the FlexiFit Diverter hole

1. Mark a reference line even with the height of the barrel on the downspout using a pencil and a beam level, placed on the barrel rim as a guide.
2. Mark the center of the downspout on line.

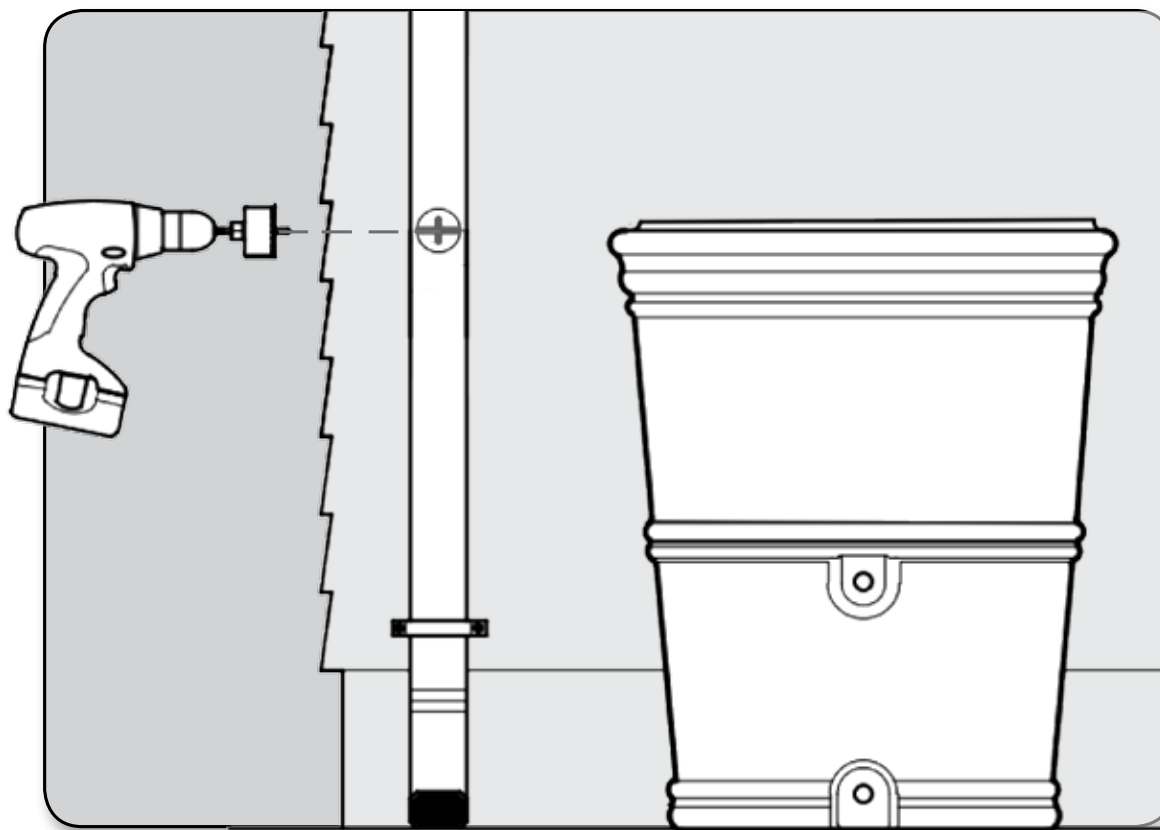
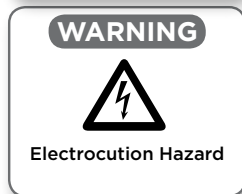
Be sure to take an elevated base into account before marking line



8 Drilling the FlexiFit Diverter hole

1. Drill a hole in the downspout with a 2^{1/8}" hole saw. The center of the hole saw should align with center point marked on downspout. After drilling, carefully remove the hole saw to prevent the cut out piece from falling into the downspout
 - a. Make sure the downspout does not have electric heating cables before cutting.
 - b. When cutting, do not force the drill. Cut slow and steady.
 - c. Always use safety glasses and safety gloves when cutting or drilling.

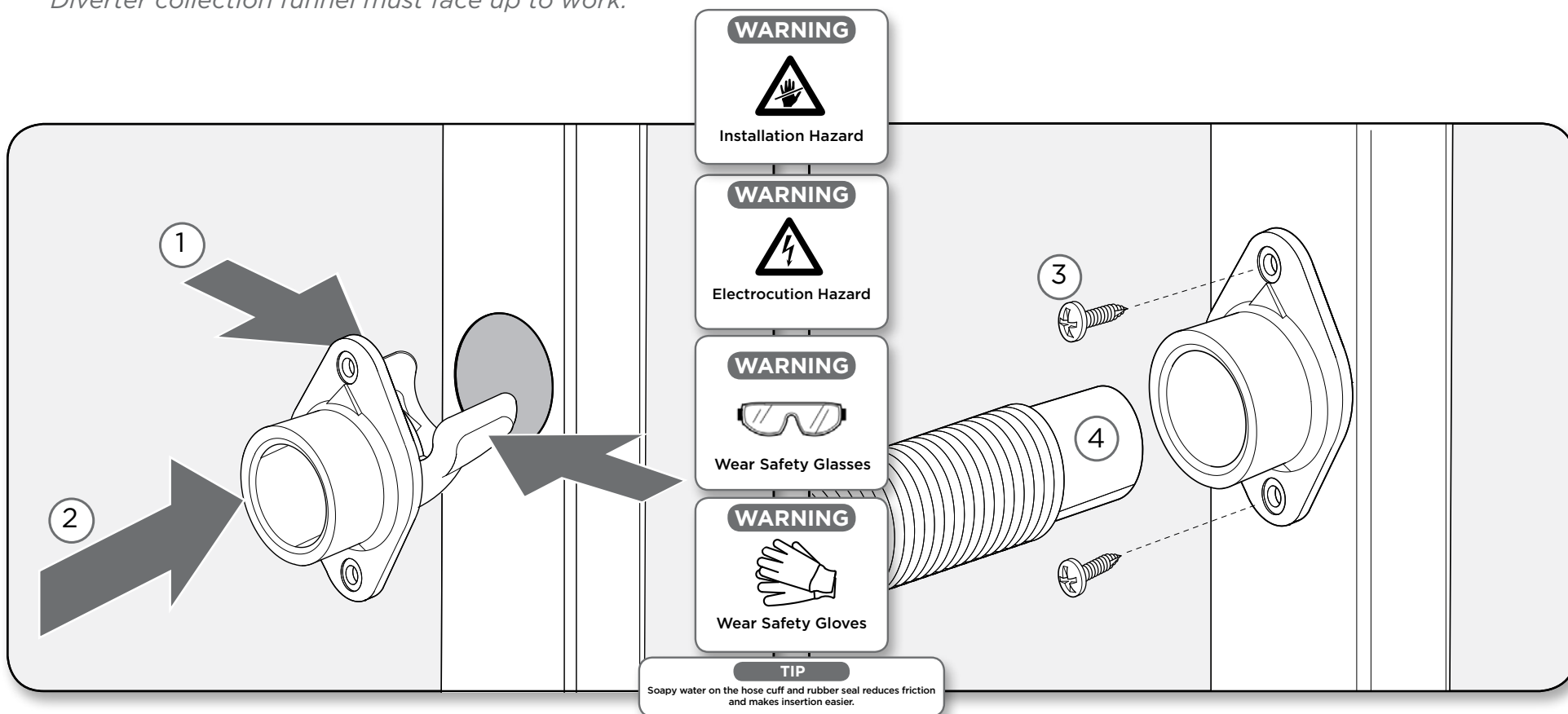
The cut edge of the downspout can be sharp. Wear protective safety gloves



9 Installing the FlexiFit Diverter

1. Squeeze the sides of the diverter together to fit into the hole.
2. While squeezing, insert the diverter into downspout hole, making sure the collection funnel faces up. Push in until the diverter's flange sits flat and tight against the downspout. Check that the arrow on the outside of the diverter is pointing straight up.
3. Use 2 of the self-tapping screws to attach the diverter to the downspout.
4. Connect short (3') fill hose by pushing the cuff end of the hose into the diverter collar.

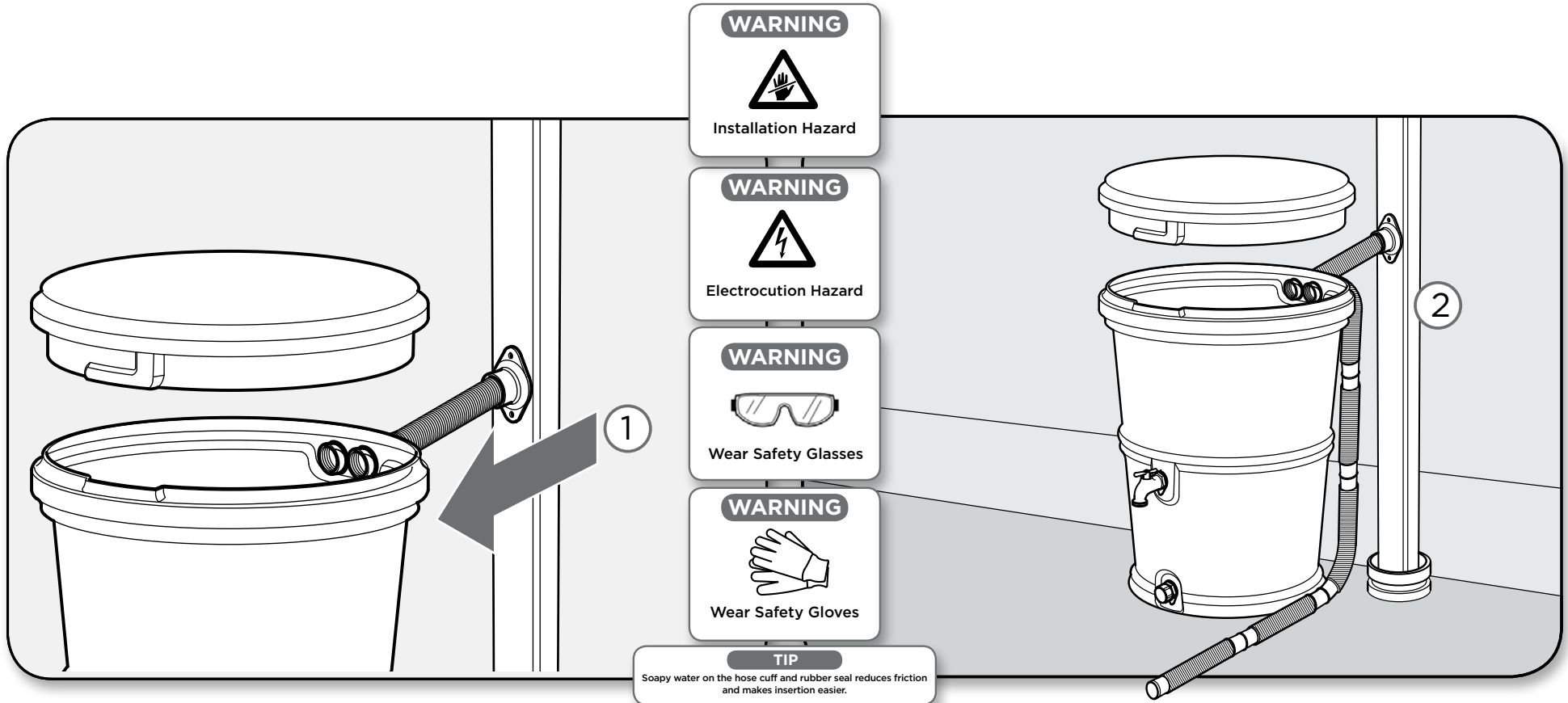
Diverter collection funnel must face up to work.



10 Connecting the Barrel

1. Connect the other end of the (3') fill hose to the water inlet on barrel. Press hose end firmly into the water inlet until it "bottoms out." The hose can be cut using scissors or a work knife, if the shorter length is required. The hose can only be cut at the center of a flat cuff section.
2. Connect the (6') drain hose to the water inlet and direct the hose end to drain away from the buildings' foundation.

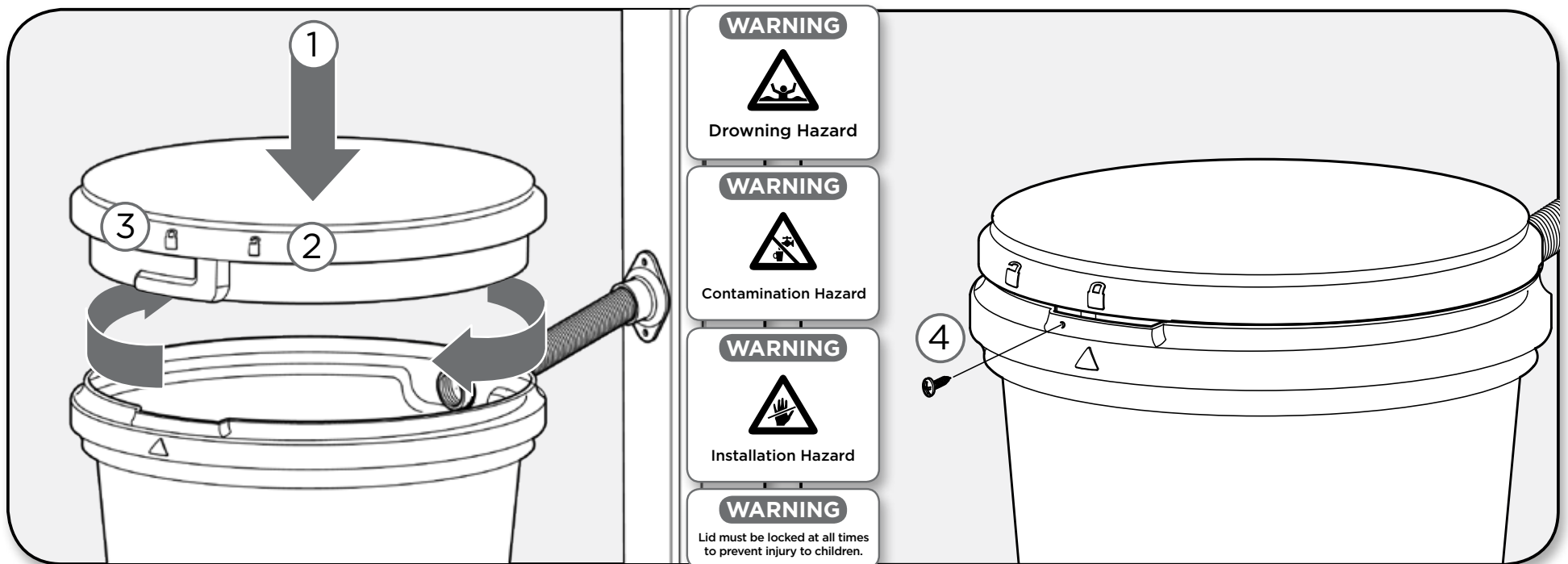
A sagging hose will collect water, which reduces filling efficiency.



11 Covering and locking the lid

1. Place lid on the barrel, making sure the arrow on barrel rim is pointing to the Unlock icon on lid.
2. **To lock lid**, turn lid until arrow points to the Lock icon.
3. **To unlock lid**, turn lid until arrow points to the Unlock icon.
4. A screw has been provided to prevent barrel from being unlocked. To use, turn lid to the locked position and center the screw on the dimple below the Lock icon. Carefully drive the screw through the rim of barrel and lid.

The screw must be removed before twisting the lid to the Unlock position.



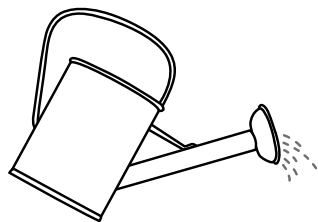
12 Using the RainStation™

There are several ways to access and distribute the water in the barrel.

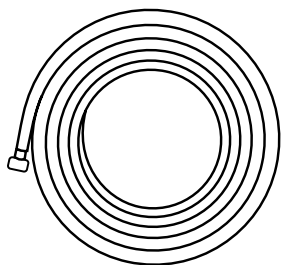
Use as much stored water as often as possible to make room for new rainwater

WARNING

Rainwater is not suitable for human or animal consumption

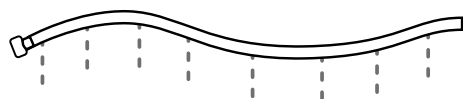


1. A **Watering Can or Bucket** can be filled by using the spigot

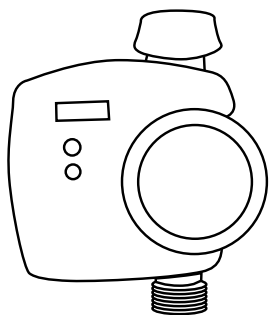


2. A **Garden Hose** can be connected to the spigot or bottom drain for watering remote areas.
Note: To achieve gravity fed water flow, the barrel must be higher than the area to be watered.

Elevating the rain barrel will improve water pressure



3. A **Soaker Hose** can be connected to the spigot or bottom drain. If connecting to bottom drain, an inline garden hose valve should be fitted in place of the drain cap. This will allow the water to be turned on/off as needed.



4. A **Garden Hose Timer** can be fitted between bottom drain and soaker hose to automatically dispense water at regular intervals.

Always be sure to tighten spigot after use. Even a slow drip will empty the barrel over time.

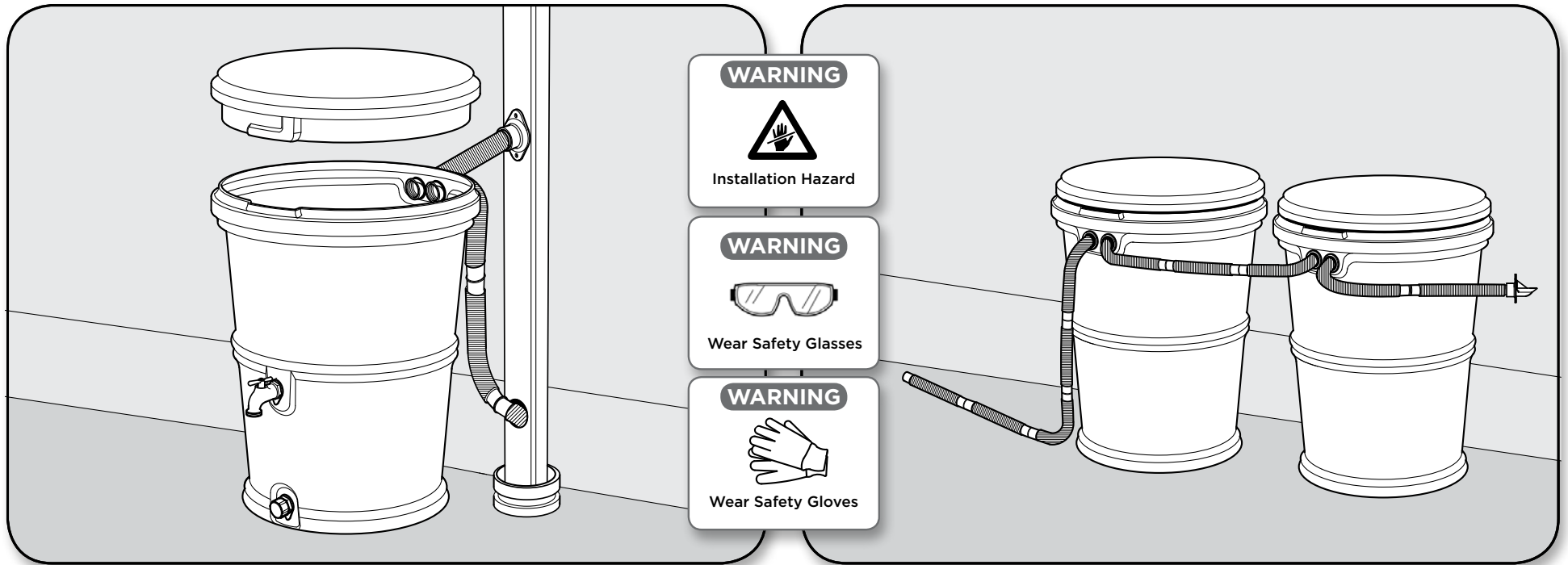
13 Alternative Configurations

If your city requires that downspouts are connected to storm drains, or if there is a problem with flooding around the rain barrel, we recommend:

1. Remove the cap joining the downspout to storm drain and insert the drain hose into the storm drain pipe besides the downspout.
2. If the cap is too small or not easily removed, drill a second hole in the downspout below the diverter and insert the end of the drain hose into the downspout at a downward angle.

RainStation barrels can be linked together to increase water storage capacity.

1. Use either hose to connect the first barrel to the second barrel.
2. Connect the (6') drain hose to the second barrel. Direct the hose end to drain away from the buildings' foundation or back into the storm drain.



14 Winterizing the Barrel

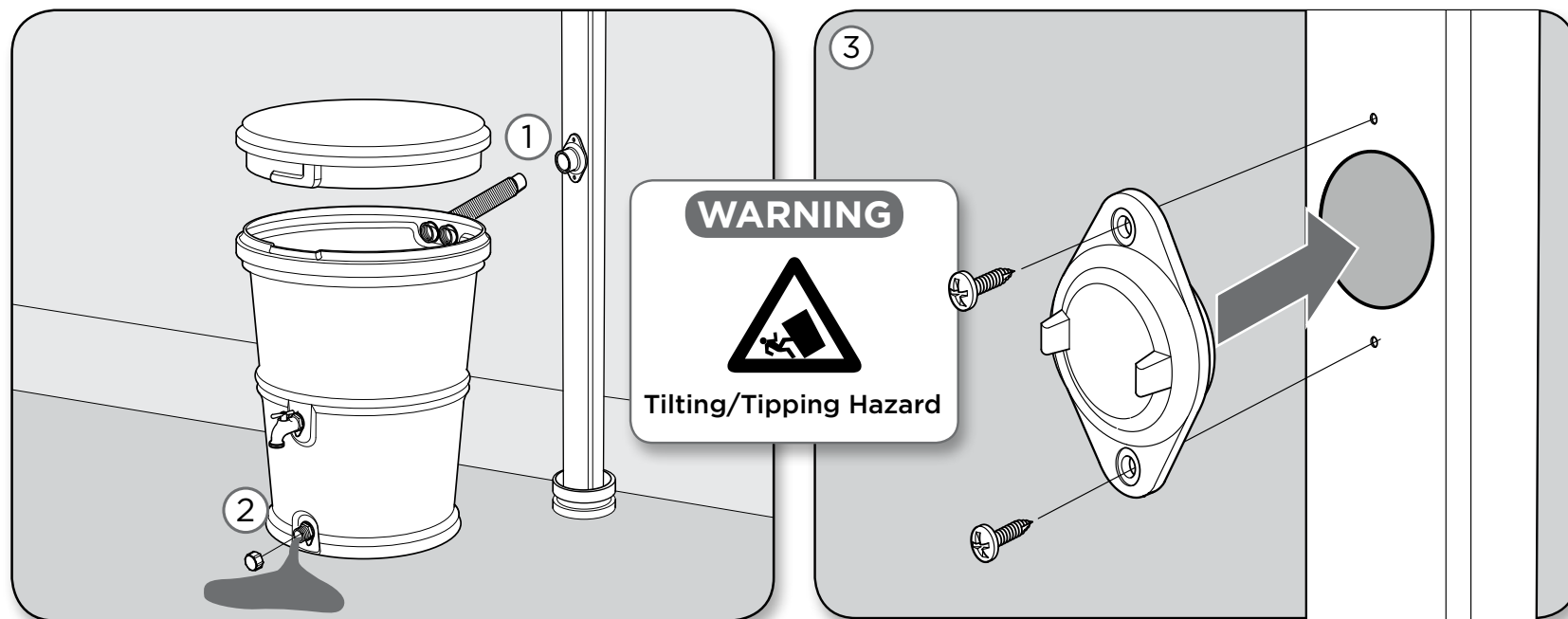
The barrel can be damaged if used in freezing temperatures.

To Winterize:

1. Disconnect fill hose from the diverter.
2. Completely drain barrel making sure the water is being drained away from buildings, foundations, walkways, etc.
3. Remove the 6' drain hose from the barrel and attach it to the diverter. Direct the hose end to drain away from the buildings' foundation
4. Add winter hole cover.

Before storing, clean debris or sediment in the bottom of the barrel, diverter, and fill hose. Reattach the cap to the drain plug once the barrel is empty.

Freezing water can damage rain barrel and void warranty.



15 Troubleshooting

The barrel does not fill with water after rainfall.

1. Remove the FlexiFit Diverter and check that it and the hose are not blocked by leaves or debris.
2. Make sure Diverter is installed with collection funnel facing up.
3. Make sure the filler hose is not raised above the Diverter.
4. Make sure Diverter is installed at the right height. If it is below the level of the barrel fill inlet, the barrel will not fill efficiently.

Drain barrel and lower the ground beneath it, so that the barrel sits at the correct height, according to instructions.

5. Check spigot and bottom drain to make sure water is not leaking. Even a slow leak will drain the barrel over time.
6. Check the drain gutter for blockage at the downspout connection.

Use a gutter screen to prevent leaks and debris from clogging the diverter and entering the barrel.

